

2025-2026 KHA Board of Trustees

Representing Kentucky Hospitals and Health Systems

OFFICERS



CHAIR

Gerard Colman
CEO
Baptist Health
System



CHAIR-ELECT

Donald H. Lloyd
President & CEO
UK St. Claire



TREASURER

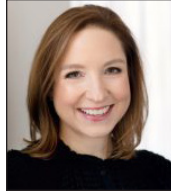
Dan McKay
President and CEO
Ephraim McDowell
Health



PRESIDENT

Nancy Galvagni
Kentucky Hospital
Association

SYSTEM TRUSTEES - TIER ONE



Hollie Harris Phillips
President & CEO
Appalachian
Regional Healthcare



Clint Kaho
President
Baptist Health
La Grange



Matt Grimshaw
CEO
CHI Saint Joseph
Health



Carolyn Sparks
CEO
Lake Cumberland
Regional Hospital



Steven Hester, MD
Senior Vice
President,
Chief Clinical and
Strategy Officer
Norton Healthcare



Garren Colvin
CEO
St. Elizabeth
Healthcare

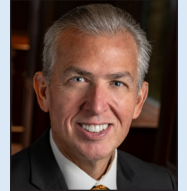


Sara Marks
President and CEO
UK King's
Daughters
Medical Center

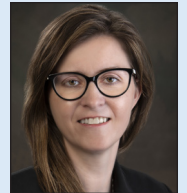


Ken Marshall
COO
UofL Health

TIER TWO



Donovan Blackburn
CEO
Pikeville Medical
Center



Ashley Herrington
CEO
Owensboro
Health Twin Lakes
Medical Center

TRUSTEES AT-LARGE



Mark Birdwhistell
VP of Government
Relations and
Public Policy
University
of Kentucky



Jason W. Smith,
MD, PhD
Chief Medical
Officer and CEO
UofL Health



Neil Thornbury
CEO
T.J. Regional
Health



Mike Yungmann
Market President,
Kentucky
Bon Secours
Mercy Health

CHAIR - KHA LEGISLATIVE COMMITTEE



Mike Sherrod
CEO
TriStar Greenview
Regional Hospital

AHA DELEGATE



Reba Celsor
CEO
Murray-Calloway
County Hospital

MAC REPRESENTATIVE



Nina Eisner
Director of
Kentucky Strategy
and Advocacy
Universal Health
Services, Inc.

DISTRICT REPRESENTATIVES

BLUEGRASS



William Haugh
Central Division
President
Lifepoint Health

CUMBERLAND



Joe Murrell
CEO
Wayne County
Hospital

OHIO VALLEY



Matthew Ayers
CAO
Norton Hospital

TWIN LAKES



Andrea McLerran
CEO
Monroe County
Medical Center

FORUM TRUSTEES

PHYSICIAN LEADERSHIP



Aaron Crum, MD
Assistant CEO and
Chief Medical
Officer
Pikeville Medical
Center

POST-ACUTE CARE



Robert Desotelle
CEO
CHI Saint Joseph
Continuing Care
Hospital

PSYCHIATRIC CHEMICAL DEPENDENCY



Brad Lincks
Regional Vice
President
Behavioral Health
UHS

SMALL RURAL CRITICAL ACCESS



Kathy Stumbo
CEO
Paintsville ARH
Hospital

2025-2026 COMMITTEES AND BOARDS

EXECUTIVE COMMITTEE

Gerard Colman, Chair
Donald Lloyd, Chair-Elect
Dan McKay, Treasurer
Mike Sherrod, Legislative Chair
Donovan Blackburn
Garren Colvin
Kathy Stumbo
Nancy Galvagni, President

COMMITTEE ON NOMINATIONS AND CREDENTIALS

Mike Sherrod, Chair
Gerard Colman
William Haugh
Donald Lloyd
Kathy Stumbo
Nancy Galvagni

FINANCE AND BUDGET COMMITTEE

Dan McKay, Chair
Gerard Colman
Garren Colvin
Clint Kaho
Donald Lloyd
Mike Sherrod
Kathy Stumbo
Mike Yungmann

KHA SOLUTIONS GROUP (KHASG) BOARD

Gerard Colman, Chair
Donald Lloyd, Chair-Elect
Dan McKay, Treasurer
Nancy Galvagni, Secretary
Donovan Blackburn
Hollie Harris Phillips
Ashley Herrington
Clint Kaho
Mike Sherrod

KENTUCKY HOSPITAL RESEARCH AND EDUCATION FOUNDATION (KHREF) BOARD

Gerard Colman, Chair
Donald Lloyd, Chair-Elect
Dan McKay, Treasurer
Mike Sherrod, Legislative Chair
Donovan Blackburn
Garren Colvin
Kathy Stumbo
Nancy Galvagni, President

KIPSQ BOARD

Ward Begley, Chair
Clark Wheeler, Vice Chair
James Frazier, MD, Secretary/Treasurer
Ruth Carrico
Jason Dean
Joyce Griffith
Heidi Murley, MD
Janet Norton
Sheila Schuster, Ph.D.
Ruth Willard

KHAPAC COMMITTEE

Donovan Blackburn, Chair
Bud Warman, Treasurer
Matt Ayers
Nina Eisner
Greg Gerard
Donald Lloyd
Charles Lovell
Mike Muscarella
Russ Ranallo

HISTORY

The Kentucky Hospital Association (KHA), established in 1929, represents hospitals, related health care organizations, and integrated health care systems dedicated to sustaining and improving the health status of the citizens of Kentucky.

MISSION

The Kentucky Hospital Association will be the leading voice for Kentucky health systems in improving the health of our communities.

VISION

To transform the health landscape to make high quality care more affordable and accessible for the people of Kentucky.

VALUES

KHA and its staff are committed to its core values.

VISION - continually planning for the future with imagination and wisdom.

RESPONSIVENESS - providing rapid response to the needs of our members and colleagues.

ADAPTABILITY - adapting to evolving challenges with flexibility.

INTEGRITY - uniting in our dedication to honesty, transparency and respect.

PASSION - working every day to fulfill our mission with energy, enthusiasm and perseverance.