

2024-2025 KHA Board of Trustees

*Representing
Kentucky Hospitals
and Health Systems*

OFFICERS



CHAIR-ELECT
Gerard Colman
CEO
Baptist Health
System



**IMMEDIATE PAST
CHAIR**
Mike Sherrod
CEO
TriStar Greenview
Regional Hospital

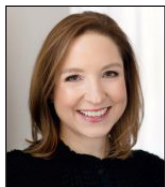


TREASURER
Mark Birdwhistell
Sr. Vice President for
Health and Public
Policy
University of
Kentucky



PRESIDENT
Nancy Galvagni
Kentucky Hospital
Association

TIER ONE - SYSTEM TRUSTEES



Hollie Harris Phillips
President & CEO
Appalachian
Regional Healthcare



Clint Kaho
President
Baptist Health
La Grange



Christy Spitsner
Interim CEO
CHI Saint Joseph
Health



William Haugh
Central Division
President
Lifepoint Health



Steven Hester, MD
Division President,
Provider Operations
& System CMO
Norton Healthcare



Garren Colvin
CEO
St. Elizabeth
Healthcare



Sara Marks
President & CEO
UK King's
Daughters Medical
Center



Ken Marshall
COO
UofL Health

TIER TWO - SYSTEM TRUSTEES



Donovan Blackburn
CEO
Pikeville Medical
Center



Ashley Herrington
CEO
Owensboro
Health Twin Lakes
Medical Center



Tom Miller
CEO
UofL Health



Neil Thornbury
CEO
T.J. Regional
Health



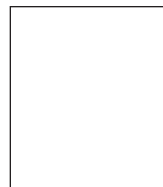
Mike Yungmann
Market President,
Kentucky
Bon Secours
Mercy Health



Donald H. Lloyd
President & CEO
St. Claire
HealthCare



Reba Celsor
CEO
Spring View
Hospital



VACANT

TRUSTEES AT-LARGE

CHAIR - KHA LEGISLATIVE COMMITTEE

TRUSTEE REPRESENTATIVE AHA DELEGATE

DISTRICT REPRESENTATIVES

BLUEGRASS



Dan McKay
President & CEO
Ephraim McDowell
Health

CUMBERLAND



Joe Murrell
CEO
Wayne County
Hospital

OHIO VALLEY



Matthew Ayers
CAO
Norton Hospital

TWIN LAKES



Andrea McLerran
CEO
Monroe County
Medical Center

FORUM TRUSTEES

PHYSICIAN LEADERSHIP



Dan Goulson, MD
CMO
CHI Saint Joseph
Health

POST-ACUTE CARE



Robert Desotelle
CEO
CHI Saint Joseph
Continuing Care
Hospital

PSYCHIATRIC CHEMICAL DEPENDENCY



Matt Ours
Regional Vice
President
Behavioral Health
UHS

SMALL RURAL CRITICAL ACCESS



Kathy Stumbo
CEO
Paintsville ARH
Hospital

2024-2025 COMMITTEES AND BOARDS

EXECUTIVE COMMITTEE

Gerard Colman, Chair
Mike Sherrod, Immediate Past Chair
Mark Birdwhistell, Treasurer
Donald Lloyd, Legislative Chair
Donovan Blackburn
Garren Colvin
Kathy Stumbo
Nancy Galvagni, President

COMMITTEE ON NOMINATIONS AND CREDENTIALS

Gerard Colman, Chair
Mike Sherrod
Kathy Stumbo
William Haugh
Garren Colvin
Nancy Galvagni

FINANCE AND BUDGET COMMITTEE

Mark Birdwhistell, Chair
Gerard Colman
Garren Colvin
Clint Kaho
Donald Lloyd
Mike Sherrod
Kathy Stumbo
Mike Yungmann

KHA SOLUTIONS GROUP (KHASG) BOARD

Gerard Colman, Chair
Mark Birdwhistell, Treasurer
Nancy Galvagni, Secretary
Mike Sherrod
Donovan Blackburn
Hollie Harris Phillips
Ashley Herrington
Clint Kaho
Donald Lloyd

KENTUCKY HOSPITAL RESEARCH AND EDUCATION FOUNDATION (KHREF) BOARD

Gerard Colman, Chair
Mike Sherrod, Immediate Past Chair
Mark Birdwhistell, Treasurer
Donald Lloyd, Legislative Chair
Donovan Blackburn
Garren Colvin
Kathy Stumbo
Nancy Galvagni, President

KIPSQ BOARD

Janet Norton, Chairperson
Ward Begley, Vice Chairperson
James Frazier, MD, Secretary/
Treasurer
Ruth Carrico
Jason Dean
Joyce Griffith
Heidi Murley, M.D.
Sheila Schuster, PhD
Clark Wheeler
Ruth Willard

KHAPAC COMMITTEE

Donovan Blackburn, Chair
Bud Warman, Treasurer
Matt Ayers
Nina Eisner
Greg Gerard
Kevin Gessner
Donald Lloyd
Tom Miller
Mike Muscarella
Russ Ranallo

HISTORY

The Kentucky Hospital Association (KHA), established in 1929, represents hospitals, related health care organizations, and integrated health care systems dedicated to sustaining and improving the health status of the citizens of Kentucky.

MISSION

The Kentucky Hospital Association will be the leading voice for Kentucky health systems in improving the health of our communities.

VISION

To transform the health landscape to make high quality care more affordable and accessible for the people of Kentucky.

VALUES

KHA and its staff are committed to its core values.

VISION - continually planning for the future with imagination and wisdom.

RESPONSIVENESS - providing rapid response to the needs of our members and colleagues.

ADAPTABILITY - adapting to evolving challenges with flexibility.

INTEGRITY - uniting in our dedication to honesty, transparency and respect.

PASSION - working every day to fulfill our mission with energy, enthusiasm and perseverance.